

FROM 1988 TO 1990 I
etched Finding the conversational-
ity with physical properties
close to both alchemy and that
union with concrete material that we
sometimes think we have.



I/V

RIGOR MENTIS

MANNIX '89



IV/V The Bathers know NO PRIVACY

MANNIX '89



n/w

The Sight of the
Eggman's face wall.

mannix 89



THE VOICE OF THE SNAKE

1/4

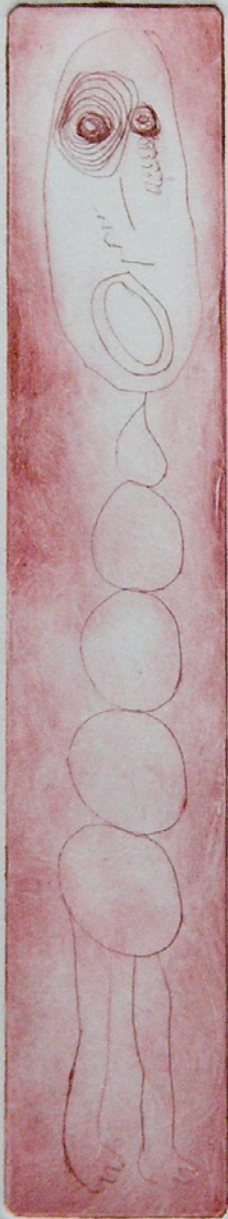
The Voice delivers
itself to the axe

MANNIX 89



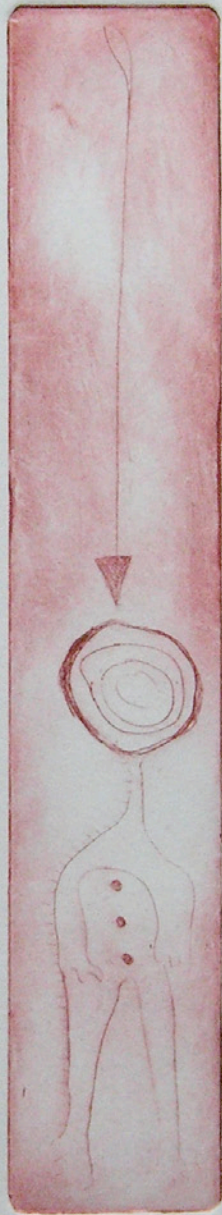
I/IV The Voice Delivers
itself to the axe.

MANIX 89

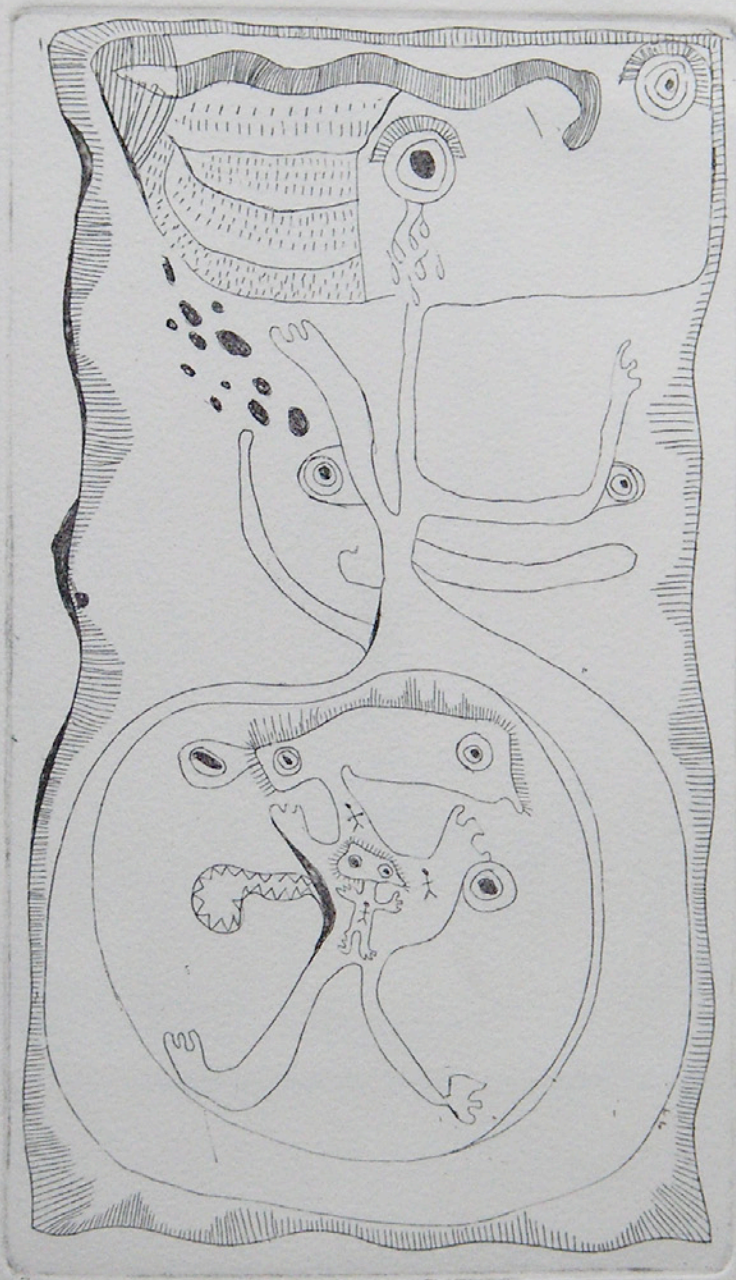


XIV

"Where does this strange family come from?"



Mannix 89



11/14

The Cannibal's face

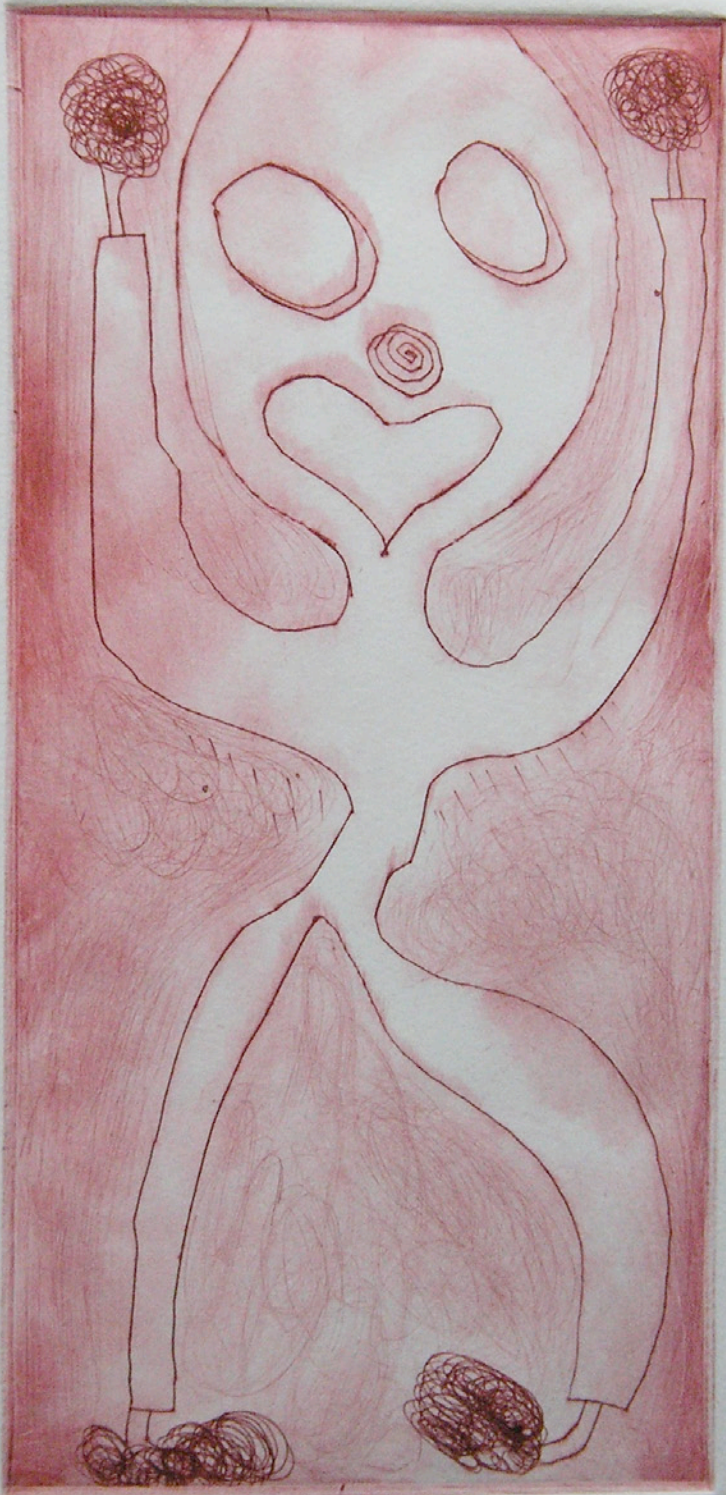
Mannix 89



IV/IV

creature inside man

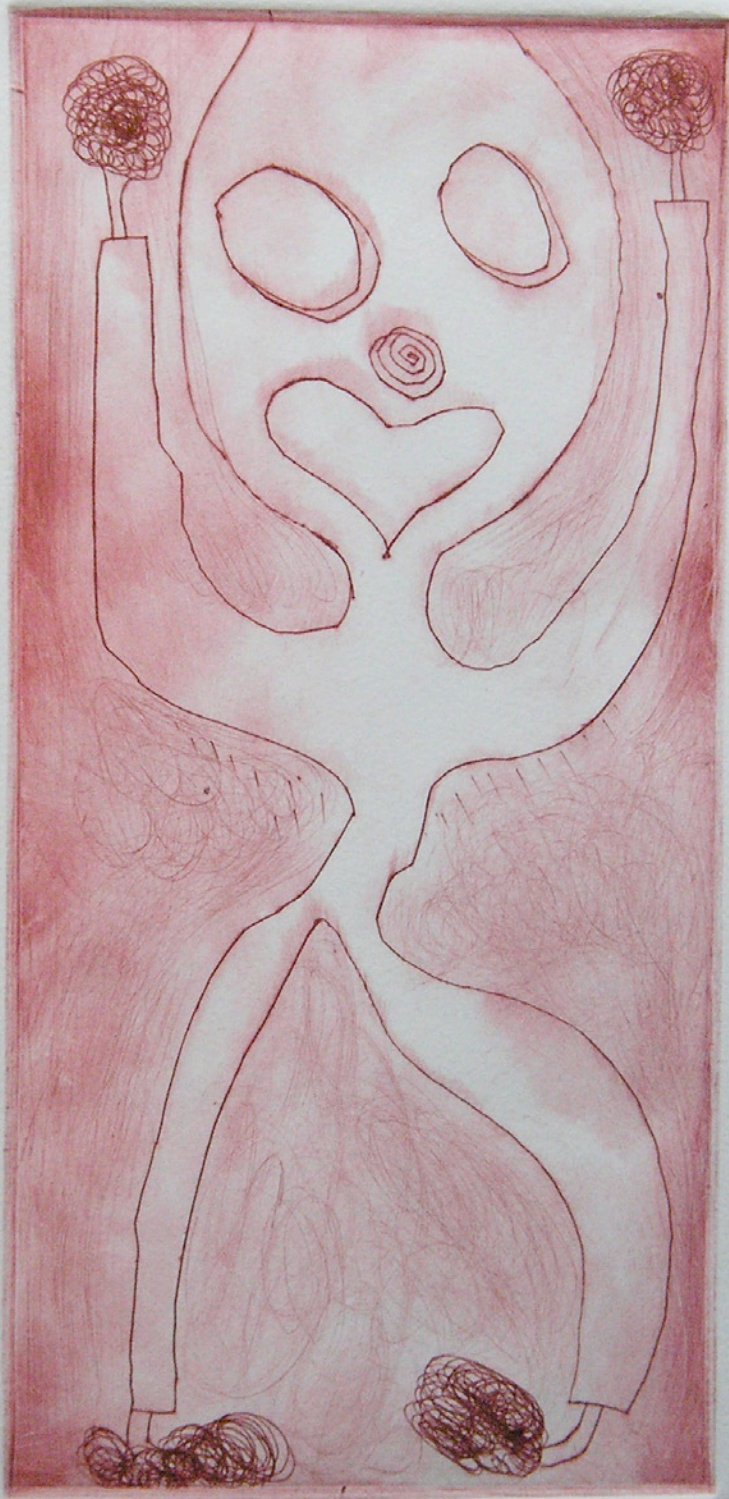
Monix '89



IV/IV

The figure as the Colossus

mannix '89



IV/IV

The figure as the Colossus

mannix '89

